

Lavenham Pre-school - New Eco School Building

“AWARD WINNING CARBON
EFFICIENT PRE-SCHOOL BUILDING
DESIGNED TO ENHANCE LEARNING
AND DEVELOPMENT”

Scotts
OF THRAPSTON
EST. 1920

CASE STUDY



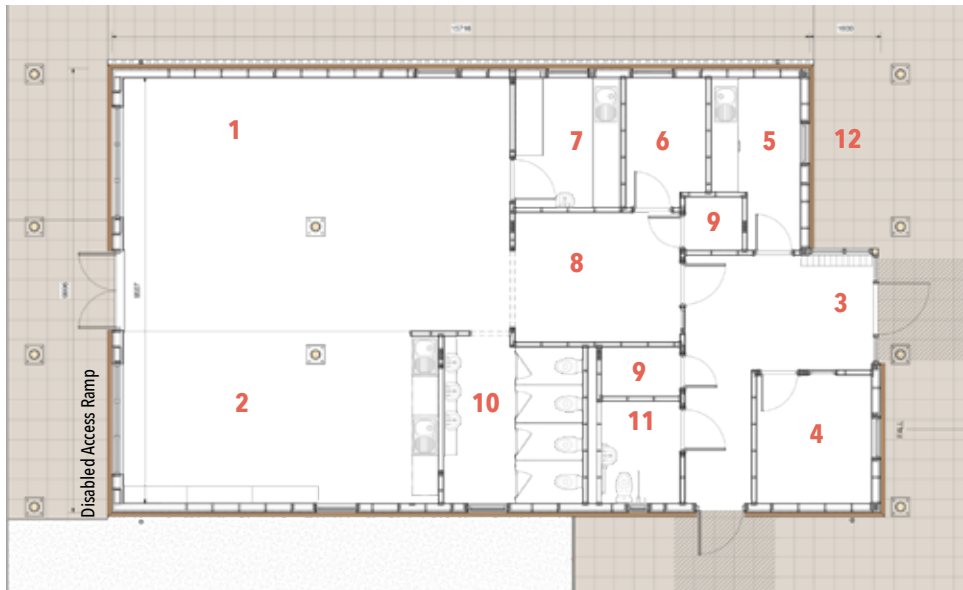
EDUCATION

PROJECT: LAVENHAM PRE-SCHOOL



Key:

- 1 Play Area - 50m²
- 2 Wet Area - 28m²
- 3 Entrance Lobby - 16m²
- 4 Office - 7m²
- 5 Staff Room - 7m²
- 6 Quiet Room - 5m²
- 7 Kitchen - 7m²
- 8 Cloaks - 11m²
- 9 Store - 2m²
- 10 WCs - 11m²
- 11 Doc M WC - 4m²
- 12 Buggy Park



Scotts of Thrapston was asked to design, engineer, manufacture and install the sustainable Lavenham Pre-school, which offers facilities for children aged 2 to 5 years.

The carbon efficient timber-framed pre-school building has the capacity for 48 pupils and includes a bright and spacious purpose-built play space, staff room, office space, toilets and a separate 'quiet room' to support children with SEN. A large outdoor play area was created using natural resources to enhance the children's learning and development.

The project was delivered as part of Scotts' turnkey solution. The handover took place 7 months after the order was placed, including a 21-week build programme. The new building was integrated with the existing timber-built community centre, with the scale and features purposefully similar.

Different materials were chosen to create interest and emphasis was placed on providing a stimulating environment, with glulam an obvious choice of material. Scotts worked closely with Lavenham Parish Council and has since won a RIBA Design Award, for the Suffolk region, for this project.

Katherine Eves, Pre-school Manager, said: "We wanted to create a building that was an alternative to a traditional build and are absolutely delighted with the finished product. We were working to a tight time constraint and Scotts were very adaptable and professional in fulfilling all our needs. We now have a very light, airy and happy place for the children which can only have a positive impact on their learning experience."

